



Sutera
SANCTUARY LODGES

KINABALU PARK LABAN RATA
MANUKAN ISLAND RESORT PORING HOT SPRING

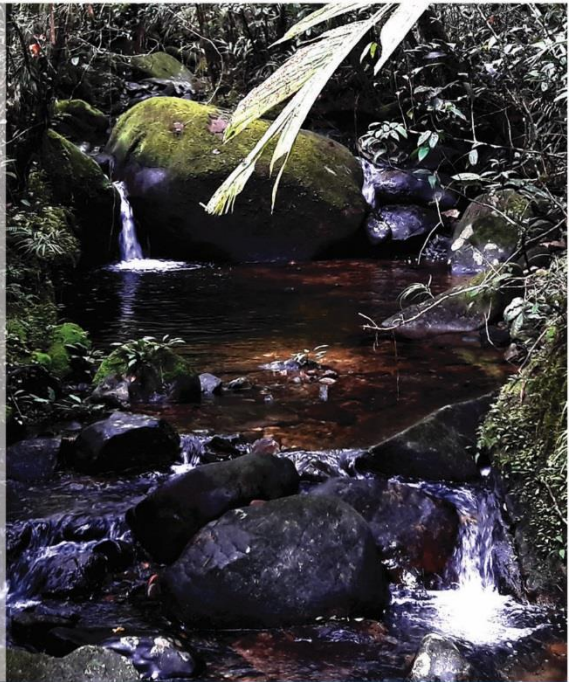
The Place To Be

KINABALU PARK

Kinabalu Park was designated as Malaysia's first World Heritage Site by UNESCO on 2nd December 2000 for its "Outstanding Universal Values" and role as one of the world's most important biological sites. Located 1,585 metres above sea level, Kinabalu Park showcases an amazing ecological system unrivalled anywhere else in the world. It carries lowland, montane and alpine vegetation on a scale that is not seen between the Himalayas and New Guinea.

FACILITIES

- Mountain Garden
- Nature Trails
- Liwagu River Trail
- Mempening Trail
- Silau-Silau Trail
- Bukit Burong Trail
- Kiau View Trail
- Bundu-Tuhan View (Sunset)
- Pandanus Trail
- Bukit Ular Trail
- Bukit Tupai Trail
- Botanical Garden
- Guided Walks - guide fees apply
- Liwagu Visitor Centre
- Climbers Briefing (Sutera Sanctuary Lodges)
 - Climbers' only
- Natural History Gallery
- The Goodie Bag Shop (Gift shop)



OTHER ACTIVITIES

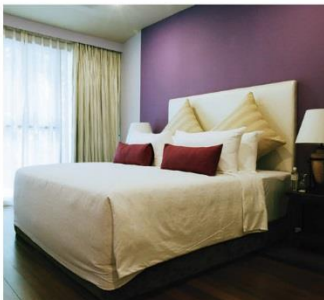
- Nabalu Handicraft Market
- Kundasang Market
- Desa Dairy Farm
- Luanti River Fish Spa

Rajah Lodge 1 Unit



- 4,564 sq ft
- 3 Bedrooms with heater :
 - 1 Room with King bed with Bathroom, Jacuzzi & Sauna
 - 2 Rooms with Twin bed with Bathroom
- 1 Common Toilet
- Dining, Pantry, Living Area & Fireplace

Kinabalu Lodge 1 Unit



- 2,244 sq ft
- 3 Bedrooms with heater :
 - 2 Rooms with King bed with Bathroom
 - 1 Room with Twin bed with Bathroom
- 1 Common Toilet
- Dining, Pantry, Living Area & Fireplace

Garden Lodge 1 Unit



- 1,375 sq ft
- 2 Bedrooms with heater :
 - 1 King bed with Bathroom
 - 1 Twin bed with Bathroom
- 1 Common Toilet
- Dining, Pantry, Living Area & Fireplace

Summit Lodge 1 Unit



- 1,020 sq ft
- 2 Bedrooms with heater :
 - 1 King bed with Bathroom
 - 1 Twin bed with Bathroom
- Dining, Pantry, Living Area & Fireplace

Nepenthes Lodge 8 Unit



- 1,560 sq ft
- 2 Bedrooms with heater :
 - 1 King bed
 - 1 Twin bed
- 1 Shared Bathroom
- 1 Shared Toilet
- Pantry, Living Area & Fireplace

Peak Lodge 4 Unit



- 1,008 sq ft
- 2 Bedrooms with heater :
 - 1 King bed
 - 1 Twin bed
- 1 Shared Bathroom
- Pantry, Living Area & Fireplace

Liwagu Suite 4 Unit



- 756 sq ft
- 1 King bed with heater
- Living Area
- 1 Bathroom & 1 Toilet



Hill Lodge 10 Unit



- 900 sq ft
- 1 King bed / 1 Twin bed with heater
- Attached Bathroom



Rock Twin Share 9 Unit (18 Beds)



- 240 sq ft
- Twin bed rooms
- Common Living Area & Fireplace
- Common Bathroom with shower heater



Grace Hostel 20 Beds



- 4,000 sq ft
- 10 units Bunk bed
- Common Living Area & Fireplace
- Common Bathroom with shower heater



Liwagu Restaurant



Balsam Cafe



Nature Trail



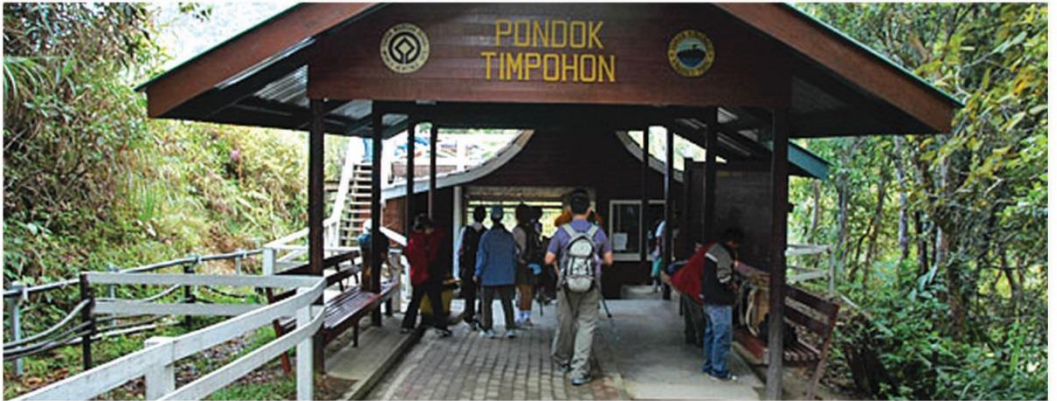
Botanical Garden



Entrance



Mountain Climbers' Starting Point



Balsam Cafe



Reception Office



PANALABAN

At 3,272 meters above sea level it is the resting point for climbers before their final ascent to the majestic Mount Kinabalu.

TRAVELLERS' TIPS

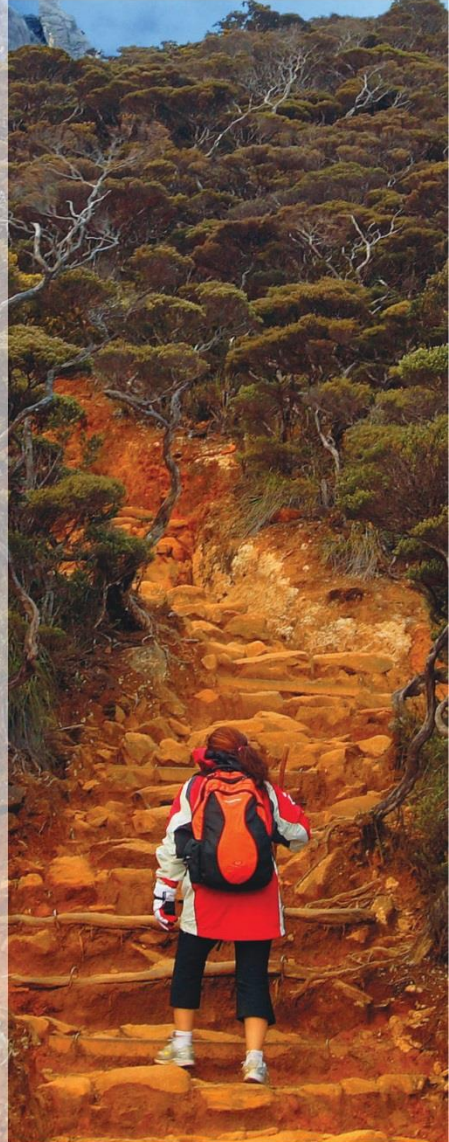
Necessary items for the mountain climb include:

- 1) Energy food i.e. chocolate bars, biscuits, glucose tablets
- 2) A head torch
- 3) A raincoat or poncho
- 4) A windbreaker
- 5) Warm clothing
- 6) A small bottle of water
- 7) A pair of gloves
- 8) An extra pair of socks
- 9) A cap or beanie
- 10) Slippers
- 11) Toiletries

WELLBEING ADVICE FOR CLIMBERS

All mountain climbers are kindly reminded that if they have a history of, or are suffering from any of the following ailments, it is highly recommended that they have themselves medically checked/certified before attempting the climb.

- 1) Hypertension
- 2) Arthritis
- 3) Heart Disease
- 4) Hepatitis (Jaundice)
- 5) Diabetes
- 6) Peptic Ulcer
- 7) Chronic Asthma
- 8) Epileptic Fits
- 9) Palpitations
- 10) Severe Anemia
- 11) Obesity (Overweight)
- 12) Muscular Cramps



Laban Rata Resthouse



- 3190 sq ft
- 30 units Bunk bed
- Common Bathroom
- Restaurant Area



- Private Room 1
- 176 sq ft
 - Twin bed room with heater
 - Attached Bathroom



- Private Room 2
- 198 sq ft
 - Twin bed room with heater
 - Attached Bathroom



- Private Room 3
- 288 sq ft
 - 3 units Bunk bed room with heater (sleeps 6 pax)
 - Attached Bathroom

Laban Rata Restaurant



PORING HOT SPRING

The natural hot spring of sulphuric water, known for its skin-curative properties, is perfect to soothe tired and aching muscles after the long climb up Mount Kinabalu.

ACTIVITIES

- Poring Hot Spring Park
(Opening hours : 7am to 6pm daily)
- Canopy Walkway
(Opening hours : 8am to 4pm daily)
- Butterfly Farm
(Opening hours : 9am to 4pm daily)
- Orchid Conservation Centre
(Opening hours : 9am to 4pm daily)
- Langanan Waterfall Trail
- Bat Cave Trail



Palm Villa 1



- 2,080 sq ft
- 3 Bedrooms :
 - 1 King bed with Bathroom
 - 2 Queen bed with Bathroom
- 1 Common Toilet
- Dining, Pantry & Living Area



Palm Villa 2



- 2,080 sq ft
- 3 Bedrooms :
 - 1 King bed with Bathroom
 - 1 Queen bed with Bathroom
 - 1 Twin bed with Bathroom
- 1 Common Toilet
- Dining, Pantry & Living Area



River Lodge 1 Unit



- 1,620 sq ft
- 2 Bedrooms :
 - 1 King bed with Bathroom
 - 1 Twin bed with Bathroom
- Living Area



Jungle Lodge 1 Unit



- 1,440 sq ft
- 1 King bed attached with Bathroom
- Living Area



Kelicap Twin Share 5 Unit (10 Beds)



- 360 sq ft
- Twin bed rooms with Bathroom



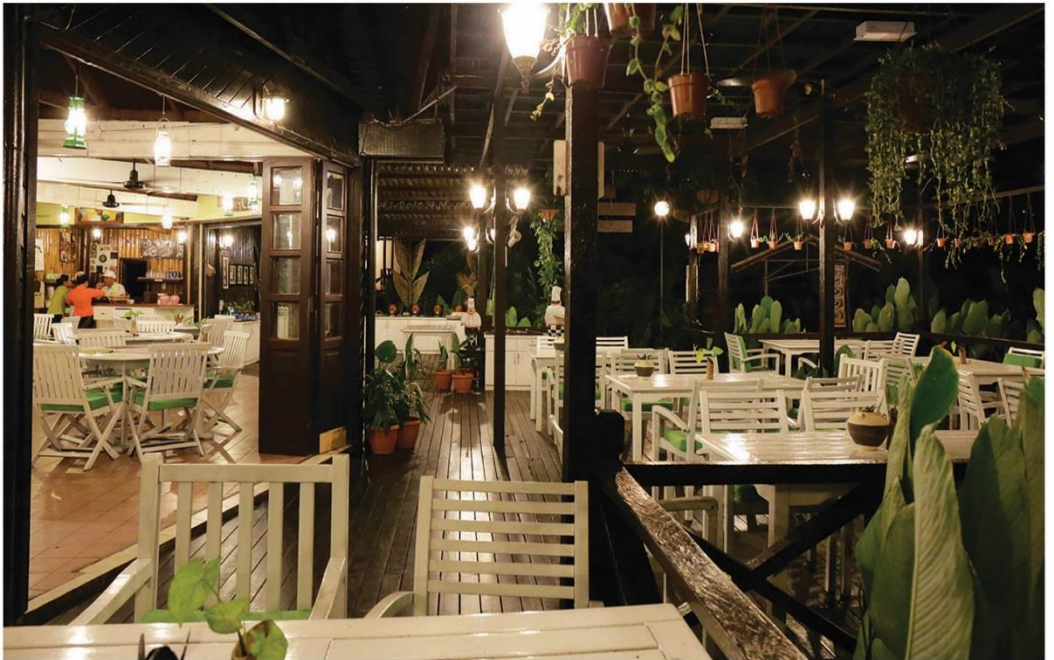
Serindit Hostel



- 4,459 sq ft
- 20 units bed (2 Bunk beds + 16 beds)
- Common Living Area
- Common Bathroom with shower heater



Rainforest Restaurant



Kipungit Waterfall



Langanan Waterfall



Canopy Walkway

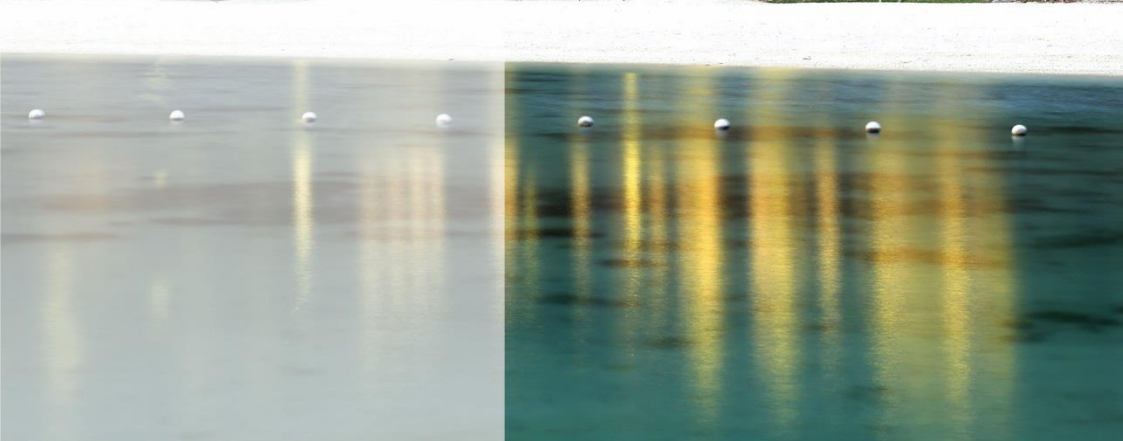


MANUKAN ISLAND RESORT

Manukan Island Resort, a 15-minute boat ride from the city capital, is the second largest island of Tunku Abdul Rahman Marine Park and Offers endless water activities to keen water sports enthusiasts. All villas on the island overlook the South China Sea and the beach is literally just outside your doorstep!

FACILITIES

- The Goodie Bag Shop (Gift shop)
- Swimming Pool
- Water Sports Activities
- Trek to Sunset Point
- Jungle Trekking
- Snorkeling
- Marine Centre



Hillside Villa - Double Storey 6 Unit



- 880 sq ft
- 1 Super King bed with Bathroom
- Fully air-conditioned
- Living Area



Hillside Villa - Single Storey 4 Unit



- 890 sq ft
- 1 Super King bed with Bathroom
- Fully air-conditioned
- Living Area



Beachside Suite - Single Storey 7 Unit



- 456 sq ft
- King Bed / Twin Bed with Bathroom
- Fully Air-Conditioned



Beachside Suite - Double Storey 10 Unit



- 456 sq ft
- King Bed / Twin Bed with Bathroom
- Fully Air-Conditioned



Manukan Villa - Double Storey 1 Unit



- 1,512sq ft
- 2 bedrooms
- Master Bedroom - Super King bed
- 2nd Bedroom - 2 King beds with bathroom
- Fully air-conditioned
- 1 Common Toilet
- Living Area, Pantry



Manukan Villa - Single Storey 1 Unit



- 1,566sq ft
- 2 bedrooms
- Master Bedroom - Super King bed
- 2nd Bedroom - 2 King beds with bathroom
- Fully air-conditioned
- 1 Common Toilet
- Living Area, Pantry



Perahu Restaurant



Activities













*Subject to availability *Terms & conditions apply



resv@suterasanctuarylodges.co.kr

WORKING HOURS (KK Times Square & Wisma Sabah)



Mondays – Fridays : 9:00am - 5:30pm

Saturdays : 9:00am - 1:00pm

Sundays & Public Holiday : Closed



   suterasanctuary

HEADQUARTERS - Block B, Lot 9, Ground Floor, Signature Office, KK Times Square,
Off Coastal Highway, 88100 Kota Kinabalu Sabah, Malaysia.
SINGAPORE OFFICE - 2, Kallang Avenue # 11-20, CT Hub, Singapore 339407
www.suterasanctuarylodges.co.kr